

Ras(G12D)

Catalog Number: 26036

Gene Symbol: RAS (G12D)

Description: Anti-Ras(G12D) Mouse Monoclonal Antibody

Background: K-Ras (G12D) is one type of K-Ras missense mutations at codon 12, changed from GGU to GAU. K-Ras protein is a membrane-associated GTPase signaling protein that regulates proliferation, differentiation, and cell survival. K-Ras G12D mutation result in decreased GTPase activity and constitutive signaling and is correlated with the development of pancreatic intraepithelial neoplasia and lung lesions.

Immunogen: Recombinant full length protein of K-Ras (G12D).

Tested Applications: ELISA, WB, IHC

Recommended Dilutions:

ELISA 1:100-1:5000

WB 1:100-1:1000

IHC 1:50-1:100

Concentration: 1 mg/ml

Host: Mouse

Clonality: Monoclonal

Isotype: IgG1, IgG2a, IgG2b

Purity: Purified from ascites

Format: Liquid

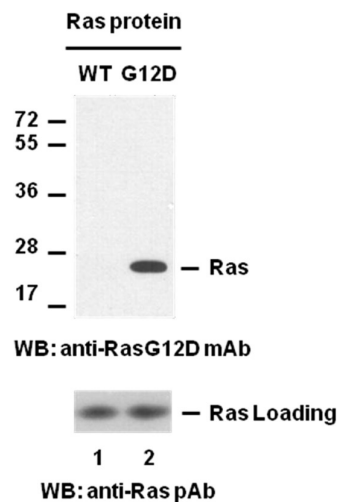
Preservative: No

Constituents: PBS (without Mg²⁺ and Ca²⁺), pH 7.4, 150 mM NaCl, 50% glycerol

Species Reactivity: Anti-Ras(G12D) antibody recognizes Ras(G12D) proteins of vertebrates.

Storage Conditions: Store at -20°C. Avoid freeze / thaw cycles

Western blot:

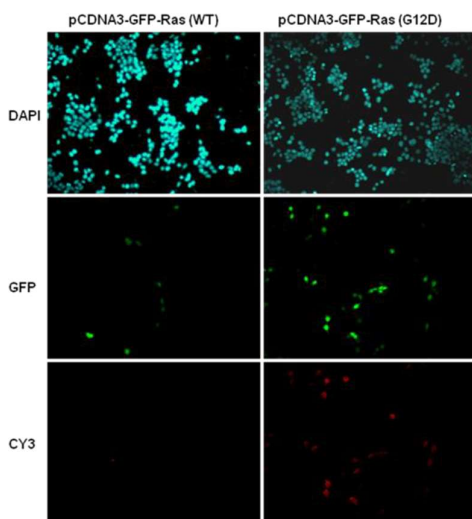


Western blot analysis of recombinant Ras WT and G12D proteins.

Equal amount of purified Ras WT (lane 1, Cat. # 10172) and G12D (lane 2, Cat. # 10154) proteins were loaded and blotted with anti-Ras(G12D) mouse monoclonal antibody (Cat. # 26036) (top panel). Input control (bottom panel) was blotted with rabbit polyclonal anti-Ras antibody (Cat. # 21021).

FOR RESEARCH USE ONLY. NOT FOR DIAGNOSTIC APPLICATIONS

Immunofluorescence:



Immunofluorescence of cell expressing Ras(G12D) protein with anti-Ras(G12D) antibody.

HEK293T cells were transfected with pCDNA3-GFP-Ras(WT) plasmid (left column) or pCDNA3-GFP-Ras(G12D) plasmid (right column), then fixed and stained with anti-Ras(G12D) monoclonal antibody (Cat. # 26036).

FOR RESEARCH USE ONLY. NOT FOR DIAGNOSTIC APPLICATIONS